

ALLAN BROTHERS



High Performance Timber Windows & Doors ... *for all seasons*



Coatings for all seasons



When you specify or buy windows or doors from **Allan Brothers** you can be sure they will be quality engineered timber products every time because they are:

- Thoughtfully designed for aesthetic appeal, durability and ease of installation, operation and maintenance.
- Well made, combining the expertise and experience we have developed over nearly 200 years in the business with the use of advanced production technology in a quality controlled environment.
- Treated and coated with specialist, modern materials to extend life, improve appearance and minimise maintenance - an essential consideration nowadays when lifetime cost is an increasingly important criteria.

We therefore deliberated long and hard before selecting the coatings to be used on our range of high performance timber products. But it will come as no great surprise that we chose Arch Coatings, one of the Europe's largest and most respected manufacturers of coatings for wood.



Quality Timber Coatings

The Arch Coating's range of wood stains and paints are well known for:

- Being low maintenance
- High durability whatever the weather
- Letting the natural beauty of the timber shine through
- Retaining their original appearance for many years.

There are many reasons to specify factory finishing:

- A superior finish can be achieved because it is applied by skilled technicians operating modern, sophisticated equipment
- Optimum and uniform film thickness gives maximum durability
- Controlled and consistent conditions during application
- 100% product coverage including all rebates as well as behind gaskets, ironmongery and other concealed surfaces
- Reduced on site costs
- The inability to achieve the above criteria may reduce the line of the surface finish dramatically, and ultimately the life of the products

It also enables us to offer a warranty of up to 8 years against our factory applied coatings cracking, peeling or flaking and before any recoating should become necessary. Moreover, 5-8 year single coating cycles tend to be the norm after that.

And this is only one of many warranties available on **Allan Brothers'** high performance products.

This means that the natural beauty of timber is combined with the same, if not better, low maintenance assurances given by manufacturers who use other materials. Moreover, when recoated, timber will look just as good as new, something that is not always possible with those other materials.

Hence, if properly made, installed and looked after, timber windows and doors can, and will, outlast those made from other materials. You only have to look around at all of the properties still with their original timber windows in place, many over a century old, to see the truth of this.

However, it is extremely important that the coatings are applied correctly. This is why **Allan Brothers** invested in its own automated paint line. It is also why some guidelines are strictly adhered to (see below).

The finishes illustrated in this folder represent our standard range, but there are over 1000 colour to choose from, including most RAL and BS4800. Please ask for further details.

The coatings we use are all water based and therefore environmentally friendly.



Do

Promote light top coats over dark basecoats because:

- A better finish can be achieved
- Minor flaws are easier to hide
- Production is faster, helping to meet deadlines

Don't

Recommend a dark top coat over a light base coat because:

- This can lead to a tiger skin effect
- A poor final finish

TRANSLUCENT WOOD STAIN

Colour Swatches



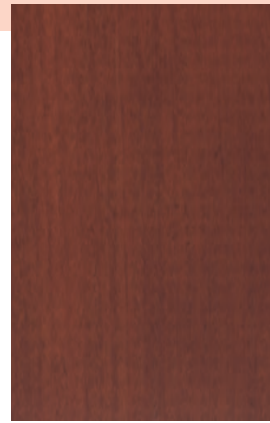
WOODSHADE 1



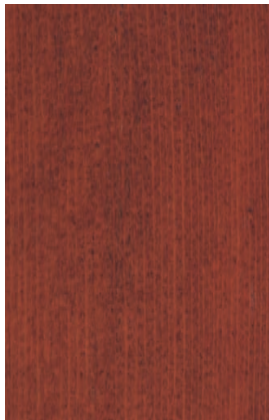
WOODSHADE 2



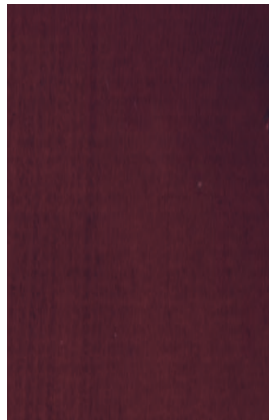
WOODSHADE 3



WOODSHADE 4



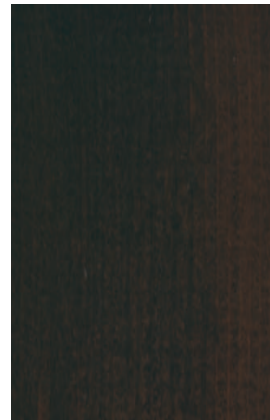
WOODSHADE 5



WOODSHADE 6



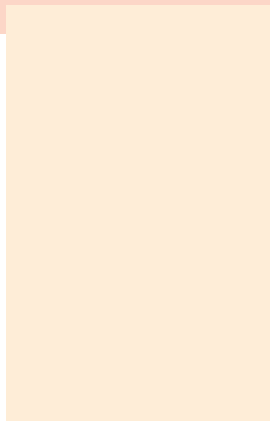
WOODSHADE 7



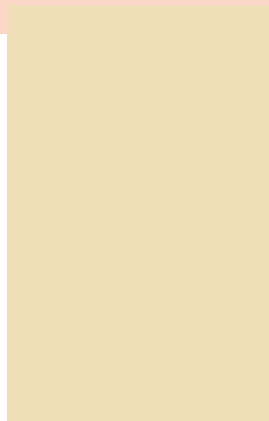
WOODSHADE 8

Please note: Due to the limitations of printing technology the sample colours shown are not guaranteed to be totally accurate. Final colour will depend on the timber texture and absorbency together with the number and thickness of coats applied. A trial application is recommended.

OPAQUE BREATHER PAINT



BS 10-B-15



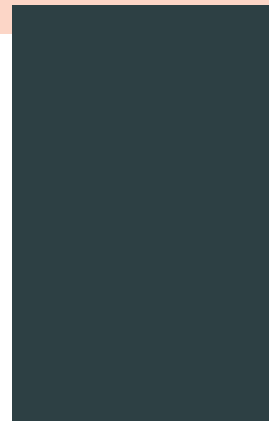
RAL 1015



RAL 1003



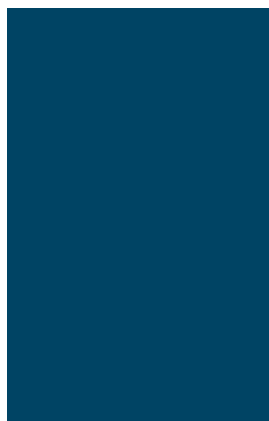
RAL 7040



RAL 7043



RAL 6005



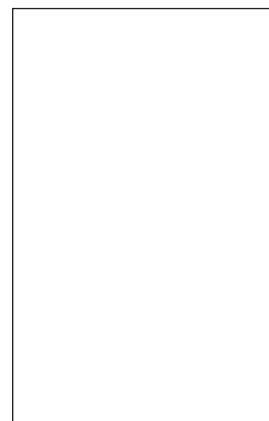
BS 18-C-39



RAL 5013



RAL 3020



WHITE

Quality coatings for high performance timber products

ALLAN BROTHERS



Allan House, PO Box 5, Berwick-upon-Tweed, TD15 2AT.
Telephone 01289 334600 Fax 01289 334601

Our policy is one of continual improvement and as such we reserve the right to modify specifications without prior notice.

Allan Brothers is a division of Palgrave Brown (UK) Ltd.